

stellaria

Stellaria NZ Cassia Brick Installation Guide



1. Taking Delivery:

The Cassia facing bricks are delivered unbroken with a length of 495mm, a height of 48mm and a width of 190mm (double bricks as manufactured).

The joint may already be broken during transport which is normal and no reason for concern. The whole connected brick pair is split before installing. After separation the width of the brick will be approximately 95mm.

2. Separation:

Use the following method to easily separate the bricks:

1. Lay 2 metal angles on a flat support, angle side up.
2. Place the unseparated connected brick on the metal angles.
3. Place a flat solid metal bar in the joint between the two bricks. By gently knocking on this metal bar in the joint, you will break the connection between the bricks and then be able to stack the separated bricks ready for installation.



3. Laying:

The Cassia brick can be laid in 3 different ways:

- Split side out only (laying only the side where originally joined (a.)
- Mould side out only (laying only the outside factory edge of the bricks) (b.)
- Mixed (laying some bricks joint-side and some factory -edge) in whatever ratio desired (c.)

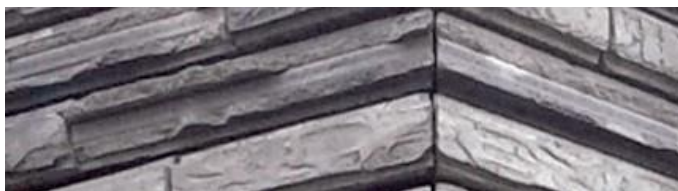
This is depicted in the images below (a, b, and c).



4. Corners:

Mitred (left) – the bricks are mitre- sawn on site before being installed. Headers are not visible.

Classic (right) – the headers of the bricks are visible. 2 out of every 3 bricks have a ‘scraped’ or mold header. These scraped headers can be applied at door and window openings in order to avoid having a ‘checkerboard’ pattern on the façade if preferred.



5. Laying pattern recommendations:

It is recommended to lay the bricks in a ‘soft’ wild bond pattern. The butt joints are staggered by a different distance per row using as many full bricks as possible. Only use cut bricks for the finish against the butt joints. This pattern gives the advantage of eliminating any issues with size variation. In general, this connection is therefore the least critical and the simplest in terms of placement. However, make sure that you avoid use of ½ bricks. Every now and then, the bricklayer may have to cut 2 bricks to connect to the corners.

6. Storage & transport

To avoid unwanted breakage, ensure transporting of connected brick pairs packs on top of each other is kept to a minimum.

Got more questions? Please contact us on (07) 823 1516.

