

# ze

INSPIRED

FASHION | BEAUTY | DECOR | PROPERTY | LIFESTYLE | FOOD



[www.davidpond.co.nz](http://www.davidpond.co.nz)



**WHITIANGA  
TOWN**  
NUMBER ONE  
LIFESTYLE 2018



**RPM  
SUMMER**  
EIGHTEEN IN  
NOW



**RANGITAHU  
RAGLAN**  
A BIT OF  
PARADISE



**CREATE  
CONSTRUCT**  
OUTSTANDING  
LUXURY



## “Architecture from the inside out...”

THIS ELEGANT PUTARURU HOME IS CONSTRUCTED USING THE POROTHERM CLAY BLOCK SYSTEM BY STELLARIA NZ LTD WITH LIME PLASTERS BY NU-AGE. SOLID BEAMS LEND VISUAL WEIGHT TO WHAT IS A FAMILY HOME WITH THE LOOK AND FEELING OF A LODGE.





THEY SAY HOME IS WHERE THE HEART IS BUT WHEN IT COMES TO THIS BEAUTIFUL ARCHITECTURAL DESIGN BY CHRIS AND ROBYN FROM MACPHERSON ARCHITECTURE LTD BUILT TO TAKE IN THE STUNNING BACK DROP OF PUTARARU ROCKY MOUNTAINS.

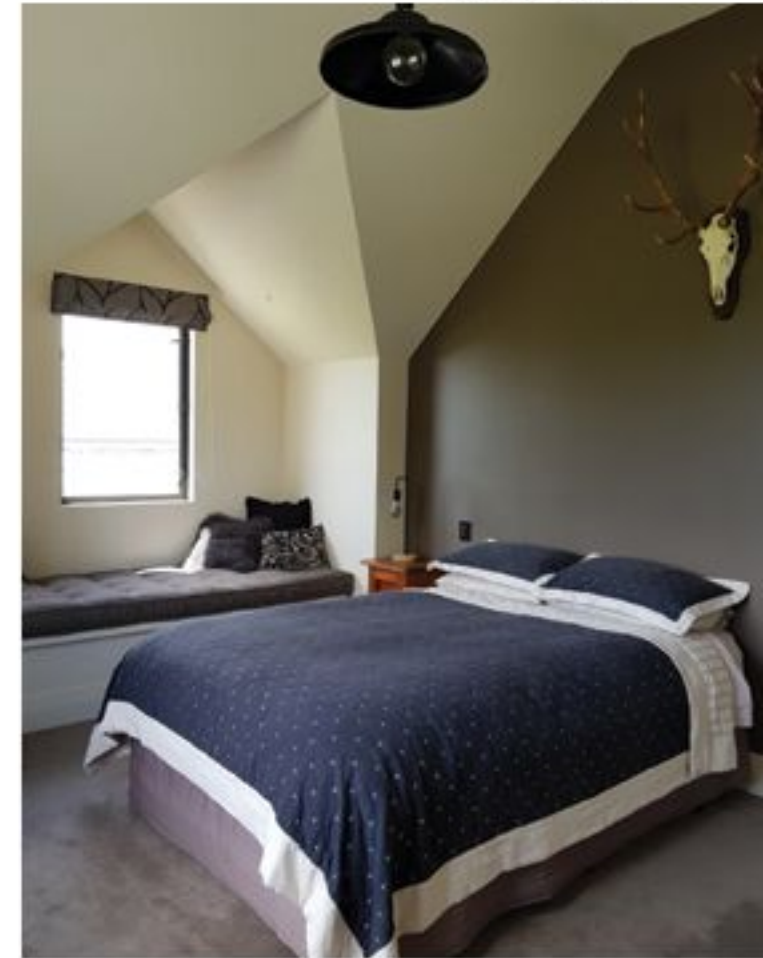
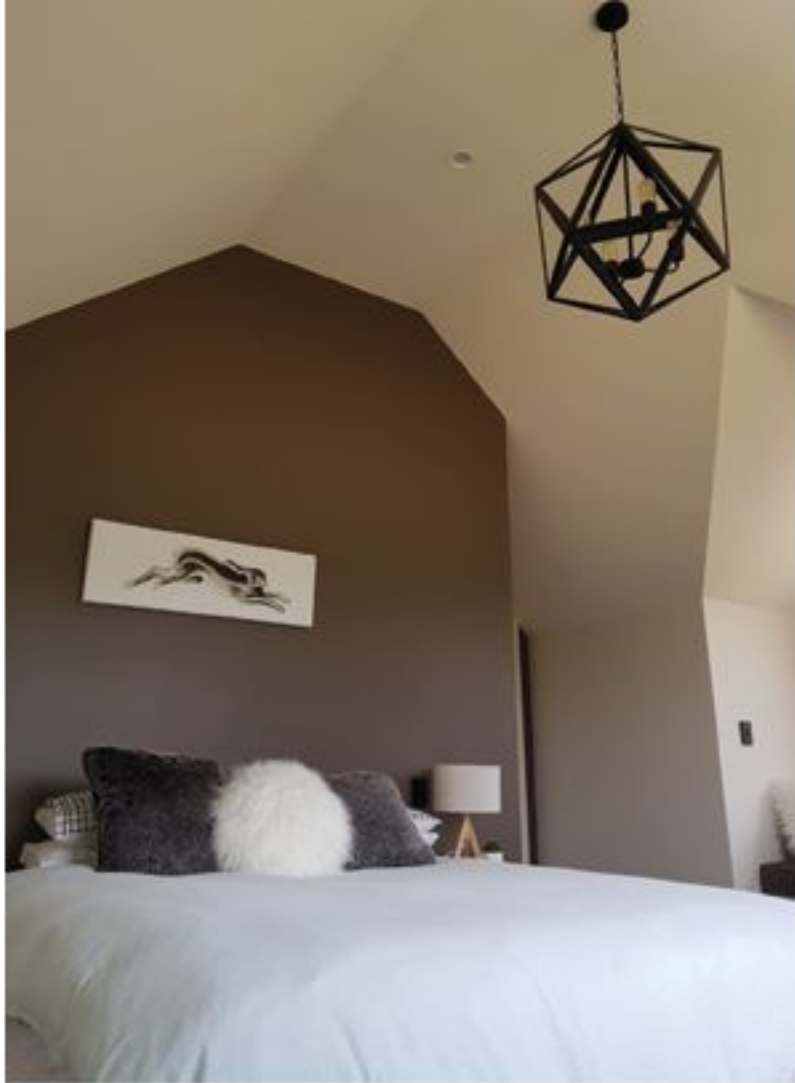
This stunning home breathes and beats to the rhythm of a labour of love and dreams of the generational family it was built for - Stuart and Deborah Ranger.

Stuart and Deb said "five years planning and almost two years to build, Chris from MacPherson Architecture immediately 'got' what we wanted to achieve and had the concept plans drawn up... after a few tweaks we were stoked with the floor plans." Then it was down to deciding what to build our home out of. Chris suggested we look into the Porotherm Block system. Stu and Deb did a bit of research about the block and although there had not been many Porotherm builds in NZ at the time, they felt that the Porotherm Clay Block was the perfect product to use with what they wanted to achieve. "The blocks used gave us the thick 250mm plus walls that give the interior a feeling of substance. It is a quiet home and when guests stay, they always comment on the silence and how well they sleep. There are many pros for the Porotherm Block, it is cool in the summer and warm in the winter along with underfloor water heating we are always warm."

Stuart and Deb had a specific list of what they wanted to achieve. A homestead that felt 'lodgey' with stone chimneys and fireplaces that blended with the rocky views, high ceilings with timber beams and to retain a warmth and almost old lived-in feeling. Stuart shot a deer and had the head taxidermized a few years prior so they needed the high ceiling in the living area to display this special trophy.

Stuart and Deb also wanted a home that felt cosy when it was just the two of them but to





also handle a large crowd easily, as they love to entertain. The design works beautifully with our bedroom and bathroom at the living end. The guest bedroom/bathroom is downstairs with their children's rooms Mitchell and Tessa (who have since left home but come home regularly with their mates) upstairs. The upstairs is designed as a getaway area with another lounge, TV room and bathroom."

The pillars at the entrance are Australian hardwood from old railway bridges - the owners used off-cuts to form the fireplace mantels. The fireplace was built by a specialist Stone Mason and the stones were hand picked by Deb and Stuart. The mantel is natural and rustic. Old railway bolts in the mantels were used to hide holes in the timber.

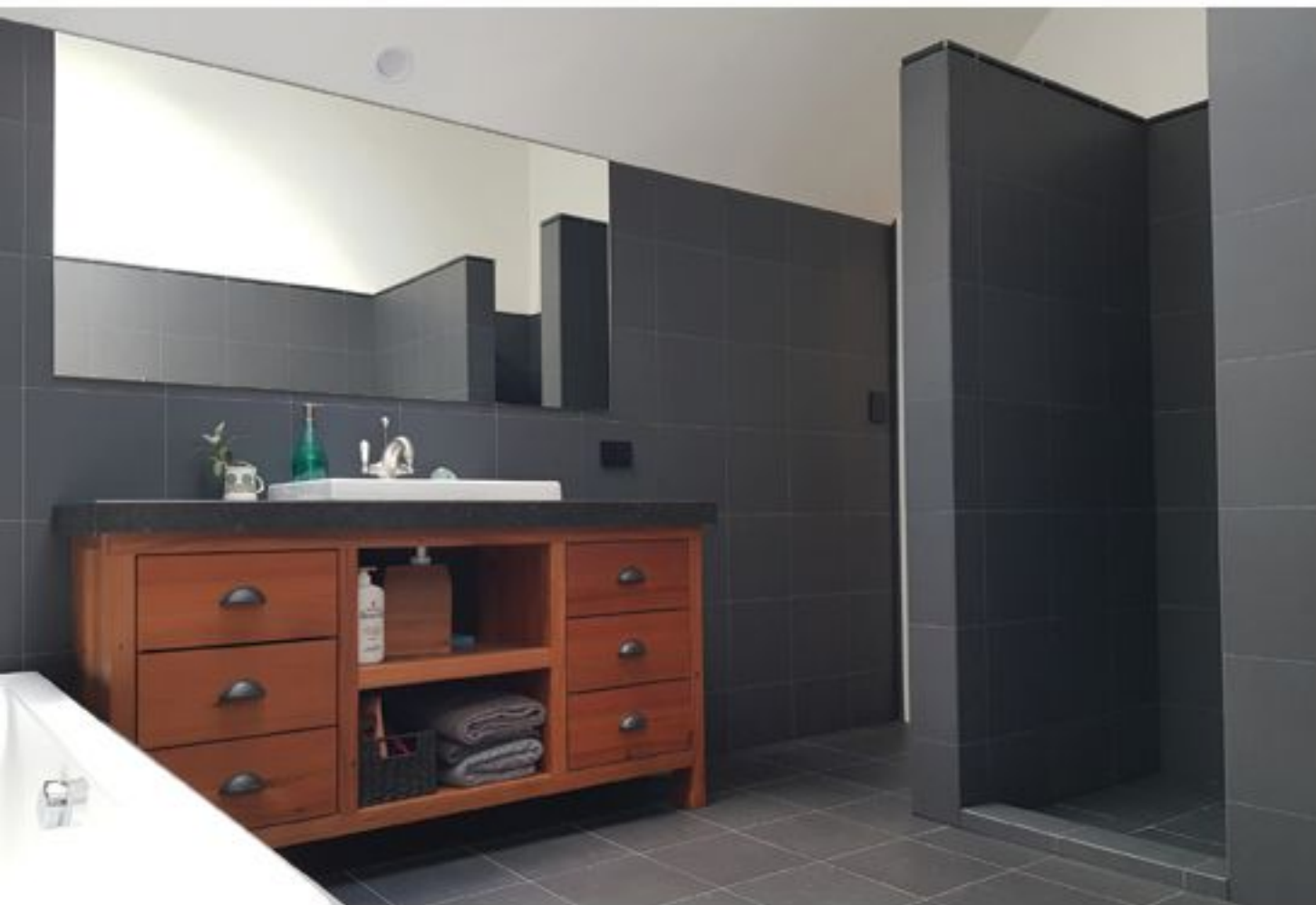
Stuart and Deb don't have a BBQ so they cook on the fire 'Argentinian' style - "it takes time to get the embers going but the flavours in the meat are so good!"

- Deb & Stu Ranger.

The beams in the living area are Lawson Cypress

"EVERYDAY WE SAY HOW MUCH WE LOVE LIVING IN OUR POROTHERM HOUSE. IT'S ALWAYS FRESH - IT JUST FEELS LIKE IT'S BREATHING. IT'S AMAZING!"

- Deb & Stu Ranger.





OUR GOAL IS TO BRING TRULY SUSTAINABLE HOMES TO THE NZ BUILT ENVIRONMENT.

with Macrocarpa sarking which was sourced from Tauriko Sawmill and Timber supplies. For the kitchen, they wanted something chunky and big that would encourage guests to sit at and become the main place for socialising. They chose native Black Maire timber. The lights above the kitchen

island were made by Richard Devine from Taupo out of a piece of steel beam which he cleverly designed, he also created the fabulous chandelier in the lounge and the stair case hand rails.



MacPherson Architecture Ltd

Cambridge Office Cnr Duke & Empire Streets, Cambridge  
P. 07 823 5124 or 027 220 7046

E. robyn@macarch.co.nz | www.macarch.co.nz



Chris MacPherson  
Director



Robyn MacPherson  
Director