

YOUR STYLE. YOUR FLOOR.



# BE INSPIRED

*Find the floor that suits your style*

# CONTENTS

## **PART 1 / BE INSPIRED**

- 04 BOEN STYLE EXPERT
- 06 FOUR STYLES
- 08 PURE NORDIC
- 16 MODERN RUSTIC
- 26 URBAN CONTRAST
- 36 CLASSIC ELEGANCE

## **PART 2 / BE INFORMED**

- 44 HOW TO CHOOSE YOUR FLOOR
- 46 STEP 1: CHOICE OF STYLE
- 47 STEP 2: CHOICE OF COLOUR
- 48 STEP 3: CHOICE OF FORMAT
- 49 STEP 4: CHOICE OF SURFACE
- 50 CLEANING & MAINTENANCE
- 51 ENVIRONMENT



# YOUR STYLE YOUR FLOOR

Do you dream of living in a home with a comprehensive and consistent style? A home that is unique and expresses your personality?

Then you are not alone. Interior design has never been more popular. Yet the huge offerings found in magazines, blogs and brands, as well as the wide range of furniture, textiles and colours, leave many people more confused than enlightened.

As the floor is integral in creating a consistent style, BOEN has made a commitment to help you find the style that you like, and choose the floor that fulfils it.

## Four distinct styles

In collaboration with the style expert Helle Tjaberg we have identified four major style groups: Pure Nordic, Modern Rustic, Urban Contrast and Classic Elegance. These are all lasting styles with clear historical origins, and they will be relevant for many years to come.

In this catalogue we give you an insight into the different styles and clear advice on which floors suit the style, and why. We will also advise you on how to apply the style consistently in your home, through recommendations on materials, objects and colour palettes.

## Your personal style

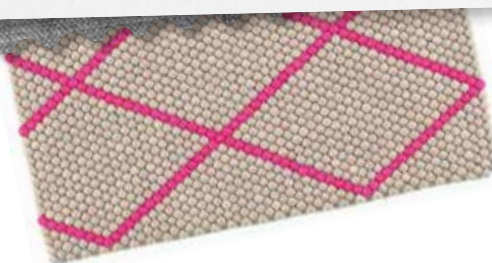
Even though we pride ourselves in being aware of the latest trends, and continually update our assortment, to us, interior consciousness is all about finding your personal style. So don't be afraid to break the rules.

Be inspired.

*Your BOEN team*



S7010-R50B



# MEET OUR STYLE EXPERT

*Because we are experts in hardwood floors rather than interior design, we have engaged in a cooperation with the style expert Helle Tjaberg.*

Helle Tjaberg has worked in design, interior and lifestyle journalism for nearly 20 years. In 2001 she became deputy editor of ELLE Decoration Norway, and was the magazine's editor-in-chief from 2005 till 2012. Today Helle runs her own company – Eget Rom – and works as a writer, advisor and consultant on trends and design.

Helle is passionate about interior design, and she loves to share her experience and knowledge both to those who follow the latest trends, and to those who need basic help in finding their own personal style. Read her tips and advice throughout this catalogue, and visit [boen.com](http://boen.com) for her latest updates.

## HELLE'S TREND GUIDE

*Having worked with interior trends and design for a large number of years, it is my pleasure to give you some input on the trends for the coming year. Personalise them to suit your style!*

Home and interior design today has a very personal touch. The aim is to create rooms and ambience that allows your personality to shine through. I hope you will be inspired to find the style that lies closest to your heart, with the help of this catalogue.

In addition to finding a style personality, there are a number of design trends that will influence your total look. Let me share with you a few of the defining materials, colours and looks for the coming year!

### **It's all in the mix!**

When contrasting materials come together, exciting things happen. Luxurious marble against natural wood, copper in combination with ceramics, concrete, glass, cork and straw – this trend has become an essential and long-running one, and is not a trend that will disappear quickly. On the contrary, I predict that we will continue to see exciting pairings between natural materials for years to come.

### **The golden touch**

Gold, brass and copper details are back on the design scene with a

vengeance, after living in the shadows of silver and steel for quite some time. Choose between golden details like candlesticks and lamps, or go all out with a copper cabinet or kitchen hood.

### **Colour harmony**

There is a common consensus that shades of blue and green will dominate this year. The harmony of green and reassuring feelings of blue are easy to work with and layer. They also work beautifully with other important trend colours, such as yellow, pink and coral.

### **The defining piece**

If you want to invest in just one major piece of furniture this year, it should really be a comfortable wing chair. It might be a new wave of nostalgia, or just a need for comfort; most large producers have launched new or updated versions of this type of chair.



We hope you will notice the high level of detail in the interior images in this catalogue. They have been styled by Norway's leading stylists Jannicke Kråkvik and Alessandro D'Orazio. The duo works with Elle Decoration as well as leading international brands.



←  
Meet our  
stylists.



*Helle Tjaberg*  
**TREND EXPERT**  
**BLOGGER**



# WHAT'S YOUR STYLE?

4  
STYLES



## PURE NORDIC

The Pure Nordic style has a clean and simple design in neutral colours. It is inspired by the soft Nordic light and proximity to nature. The style is perfectly complemented by blonde wooden floors.



## MODERN RUSTIC

The Modern Rustic style is laid-back and full of soul and warmth. It is rooted in an authentic country life, yet retaining a modern look. Wooden floors with a rustic finish and lots of personality will fulfil the style.

*We have identified four lasting styles for you. They all have clear historical origins and will be relevant for many years to come. Look through all the varieties and possibilities, and use the styles as an inspiring tool. Our aim is to make it easier – and more fun – to get the most out of your flooring!*



## URBAN CONTRAST

The Urban Contrast style allows for playful mix-and-match with organic curves, vivid colours and graphic patterns. The style is accentuated by wooden floors in greyish and dark brown hues.



## CLASSIC ELEGANCE

The Classic Elegance style is refined, calm and orderly. The materials are exquisite and objects have an aura of timeless quality. An elegant wooden floor in colours ranging from golden to dark brown will emphasise the style.



# PURE NORDIC

*So pure, so simple, so neutral. There are no disturbing elements to this style. Inspiration comes from nature's tranquil palette, creating a cool interior look, characterised by abundant use of blonde wood.*

*Dive into a wave of Nordic inspiration.*



→ Clean and simple design  
which complement light  
wooden floors.





## NORDIC FLOORS

*The floors in the Pure Nordic style are all in a lighter and paler shade, creating a calm and airy backdrop to the Nordic interior.*

These floors are typical for this style:



Oak Concerto White  
3-Strip



Oak Pearl  
Castle Plank  
with Micro Bevel



Oak Andante Plank  
Square Edge

The Nordic floors have a matt surface, due to the use of natural oil or matt lacquer. They are often treated with white pigmentation to mute the original colour. Wider planks and planks with bevel accentuate the long lines and the purity of the style. Longstrip floors in a tranquil and pale grading are also suited to this style.

See all our floors for the Nordic style at [boen.com](https://boen.com)

The beautiful light flooring  
elongates the room, and brings  
warmth to the white walls.







*Salad set, Nature Kebony,  
by Skaugum.*



## NORDIC COMMENTS FROM HELLE

I love the purity, beauty and functionality of the Pure Nordic style, and its accompanying floors. Remember that this is a style where natural materials are supposed to play the leading role. Look to nature for inspiration both in the details and the colour palette!

### Inspired by nature

Nature, light and the changing seasons – it's impossible not to be inspired by the Nordic style. You see it in a pale tree trunk, you sense it in the mist over a meadow, and you feel it in the warm wool from a wild sheep.

These are all components in the Scandinavian style. We choose colours from the pale end of the palette and we select furniture with clean, functional lines. The look is uncomplicated; inspired by nature and the variations of light.

### Historical origins

The Pure Nordic style has its origins in the Scandinavian Design Movement from the 1950s. In this era it became technically possible to mass-produce furniture, which created opportunities for a completely new type of interior design. The designers focused on functionality and innovation; wood was shaped into new forms and angles.

### Functional simplicity

Simplicity, minimalism and functionality characterise the Pure Nordic style. The

furniture has a clean and uncomplicated look, and the colours are neutral and muted. Black is often added to create contrast.

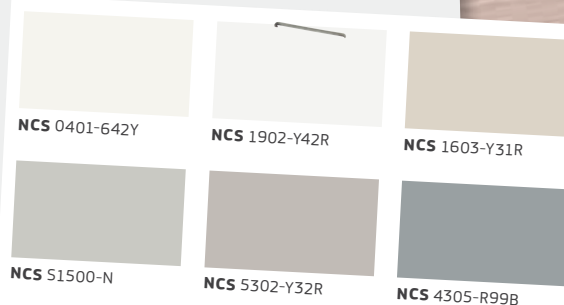
### Blonde wood, wool and cotton

To get the Nordic style you need to focus on sustainable, natural material. The style is dominated by blonde wood, with wool and cotton as the main textiles. Ceramics and glass are designed to fit the shape of your hands, whether it's the first cup of tea in the morning or the cutlery for a festive dinner.

Pure Nordic celebrates the uncomplicated natural beauty of everyday life.

- 1 | Giving uniform and minimalistic look Oak Concerto 3-strip.
- 2 | Look to the lighter scale of colours in our floors, such as the beautiful Oak Pearl.
- 3 | Glass vase, from the Alvar Aalto collection, Iittala.
- 4 | Throw Frost, design Scandinavian Surface, Rørros Tweed.
- 5 | Oak Pearl.

*Paints to match:*



5

4

Combine natural materials like warm wool and pale wood.



3



2

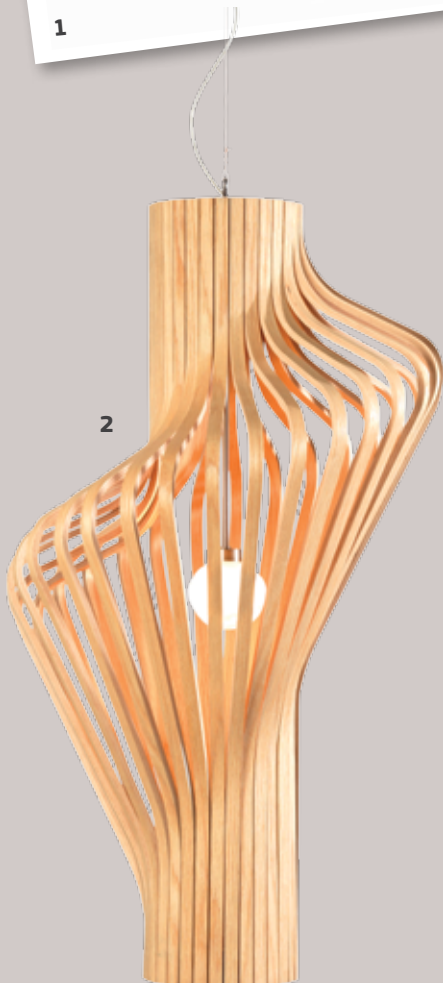


The Tripp Trapp® chair expertly combines functionality and form.



Photo: Stokke®

1



2



3

Keep warm in a cosy blanket by the fire.



4

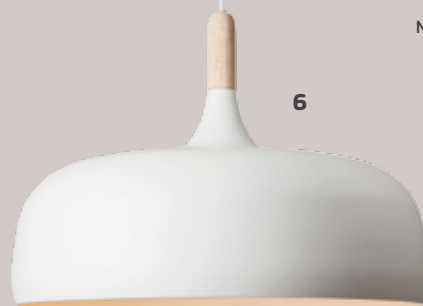
## GET THE NORDIC *LOOK*

Oak Concerto, 3-Strip

Oak Pearl, Castle Plank

Oak Andante, Plank

5



6

### Nordic furniture and accessories you will love:

1. Tripp Trapp®, design Peter Opsvik. Photo: Stokke®.
2. Lamp Diva, design Natedal & Egset, Northern Lighting.
3. Rype by Røros Tweed makes sure you keep warm during the cold season. The colours reflect the arctic flora, and the motive is the mountain bird grouse.
4. Kristian Vedel designed a little family of wooden birds back in 1959. Today they are brought back to life by Architectmade.
5. The iconic Egg chair, design Arne Jacobsen and produced by Fritz Hansen, in a cool and light grey shade to fulfil the Nordic look.
6. Acorn ceiling light, design Atle Tveit, by Northern Lighting.
7. Alto by Andreas Engesvik, Fjordfiesta, has beautiful structured lines and a thin tabletop in oak.

### Check out these blogs:

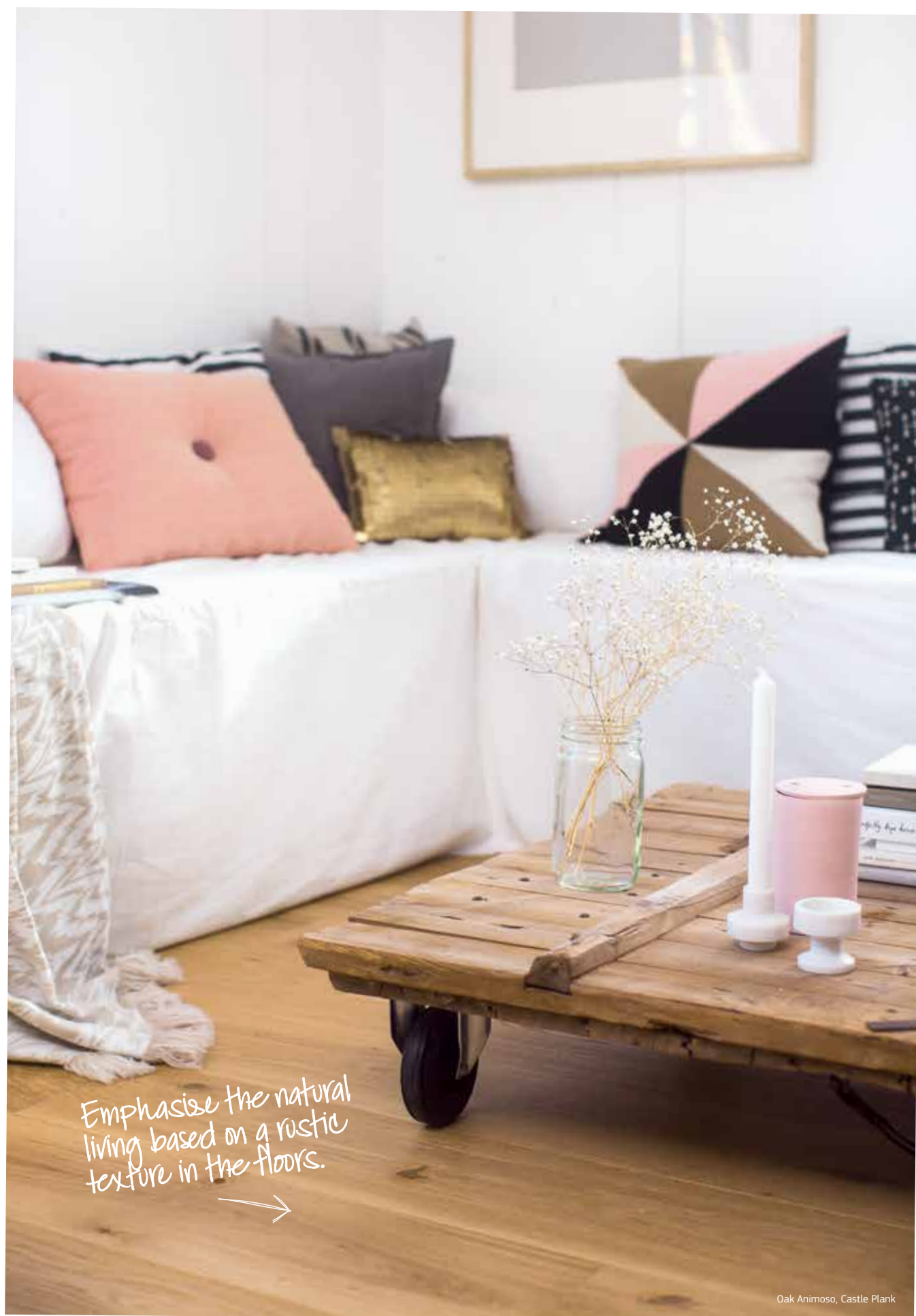
[designville.cz](http://designville.cz)  
[stylizimoblog.com](http://stylizimoblog.com)  
[emmas.blogg.se](http://emmas.blogg.se)  
[annaleenashem.blogspot.no](http://annaleenashem.blogspot.no)  
[nordicdesign.ca/blog](http://nordicdesign.ca/blog)  
[lottaagaton.se/blog](http://lottaagaton.se/blog)



7

# MODERN RUSTIC

*Laid-back and cosy. Rooms full of soul and warmth.  
The floors have a rustic charm with their wide, rough floorboards  
and muted colours. There is plenty of space for everyone here,  
because this is where it's good to be.*





## RUSTIC FLOORS

*The Modern Rustic floors are recognised by their texture and personality.*

These floors are typical for this style:



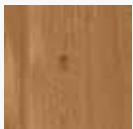
Oak Pearl  
Castle Plank  
with Micro Bevel



Oak Finale 3-Strip



Oak Andante Plank  
Square Edge



Oak Animoso Plank  
with Micro Bevel



Oak Barrel  
Castle Plank  
Brushed with Micro Bevel



Oak Alamo  
Castle Plank  
with Micro Bevel



Oak Animoso  
Castle Plank  
with Micro Bevel



Oak Animoso  
Castle Plank  
Brushed with Micro Bevel

The Rustic floors have a "lived-in" appearance with lively patterns. This creates a cosy and warm atmosphere. They come in a wide range of colours, from the lighter oak pearl to the darker antique look. The surface should preferably be oiled, to accentuate the warmth of the wood.

See all our floors for the Rustic style at [boen.com](https://boen.com)





Floors with a naturally  
rough surface support  
an active daily life.





An exclusive floor designed  
to last for decades





2



## RUSTIC COMMENTS FROM HELLE

There are so many beautiful textures, shapes and colours to play with in the Modern Rustic style. It is feminine to a degree, but industrial and ethnic elements add masculinity. The ambience of a Modern Rustic home embraces you, and makes you feel grounded; it is the perfect modern take on our past.

*A beautiful still life in muted colours.*

### A modern celebration of the past

Your present celebrates your past. We see it in your home, where every little thing tells a story. A well-used baking bowl in beautifully shaped ceramic, a flowing curtain in front of a small-paned window, and a solid kitchen table to gather your friends around.

Modern Rustic reflects that you appreciate what has been, but also what's coming next. The main features originate from the notion of a cosy, relaxed lifestyle in rural surroundings, put into the context of modern daily life.

### Historical origins

Modern Rustic has a long history, and traces its origins from Swedish Gustavian style and French feminine shapes from the 1700s. The style is however constantly evolving, and after a flirt with faded florals and religious motifs in the 1980s and 1990s, the style is now permeated by industrial and ethnic elements. This creates interesting meetings between nostalgia and modern life.

### Authentic ambience with lasting value

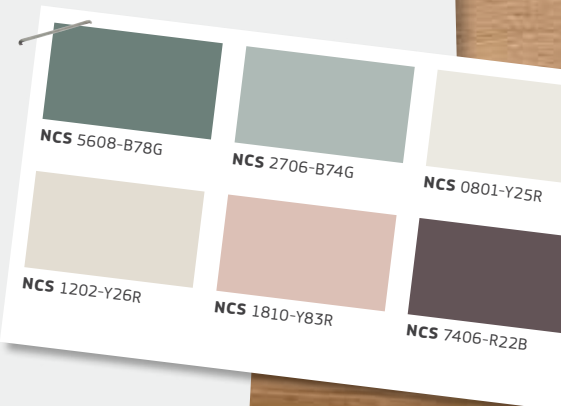
At the heart of the Modern Rustic style lie beautifully crafted objects with a sense of lasting value and authenticity. The ambience is inviting and comfortable, creating the space for a slower lifestyle.

### Rough wood, linen and ceramics

Choose hardwood floors with rough surfaces with cracks and knots to get that right Modern Rustic look. They should look like they withstand tough treatment, from toy building bricks to furry paws and heavy boots. The floors look part of a life gone by and of a life to come. The textiles are nature-based, such as cotton and linen, while the furniture and rugs are plaited or woven. The colour scale is neutral with features in warm tones. Ceramics feature in the kitchen, alongside metal and steel.

Modern Rustic provides a breathing space in a rapidly changing world, and keeps us in touch with our past without being overly sentimental.

*Paints to match:*



1 | Oak Barrel Castle Plank brushed with a brown pigment to give a dark brown rustic effect.

2 | Ceramics and sandstone in relaxing colours with a touch of natural beauty.

3 | Copper candlestick, Lup, by Hay.

4 | The Rakis sofa is cosy and inviting, by Norrgavel.

5 | Ceramic vases by Tortus Copenhagen.

6 | Linen fabric by Home & Cottage.

7 | Oak Animoso.

5



7

6

*Make sure you feel comfortable.*



3



4

**Emphasise nature**

Oak Alamo is a very good choice within the Modern Rustic style. The enhanced natural look by staining the oak wood creates a vibrant, lived-in look. Be careful to choose an oiled surface to accentuate the warm ambience.

**THE FLOOR**

Oak Alamo  
Castle Plank





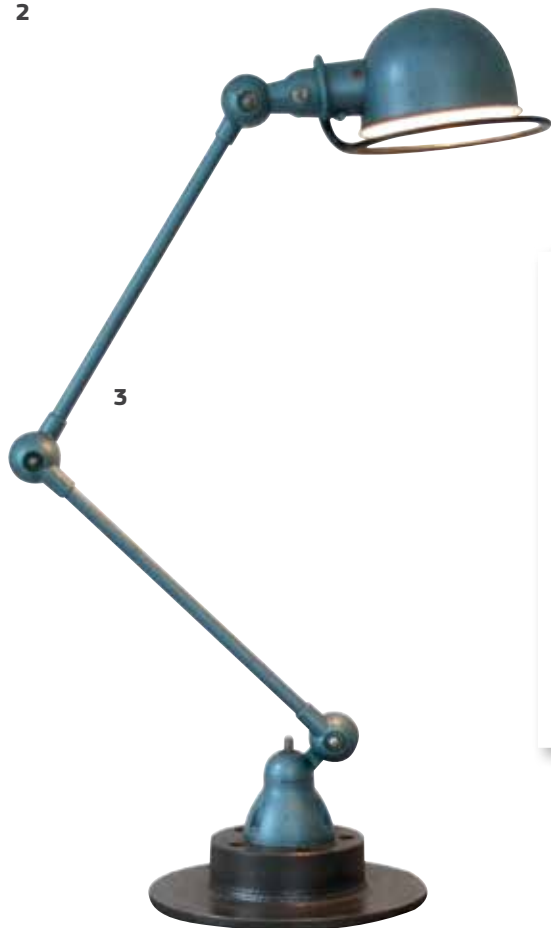


Modern Rustic furniture  
is low maintenance and  
relaxed with soft furnishings  
in abundance.





Choose dusty green  
elements throughout  
your interior.



Oak Andante, Plank



The copper look of  
a metal lamp softens  
the expression.

6

## GET THE RUSTIC LOOK



7



8



### Rustic furniture and accessories you will love:

1. Sustainability and an organic lifestyle are in focus.
2. The woollen pillow by Hay signals the quietness of a lake, just after the sun has set.
3. Back in 1950 Jean-Louis Domecq finalised his optimal working lamp. Today it is an icon signalling rustic simplicity. Loft is in production by Jieldé.
4. Make small arrangements and still lifes by bringing elements from nature inside and putting them in glass and ceramic vases. These are by House Doctor.
5. The metal lamp looks like a sculpture, and lightens up your activities. By Bloomingville.
6. Mix and match different types of chairs, and make your guests comfortable by adding soft and warm cushions. The creamy colour of the wall picks up the light spots of the Oak Animoso floor, available also in a textured brushed surface.
7. Oak Alamo's personality fits perfectly within a rustic atmosphere.
8. Hanging light, Jam Jar, by Piet Hein Eek.
9. Make the rustic table yourself, or get this one already done by Bloomingville.

### Check out these blogs:

byfryd.com  
 style-files.com  
 decoratorsnotebook.wordpress.com  
 nordicbliss.co.uk/blog  
 aprilandmaystudio.blogspot.co.uk  
 mechantdesign.blogspot.no  
 wabisabi-style.blogspot.no

9



# URBAN CONTRAST

*Play with colour, shape and functionality. Mix and match materials and patterns. The floors add warmth and radiance to a personal style where rules are meant to be broken. Life and energy in your home!*



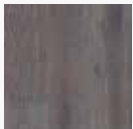


Playful design suits floors  
ranging from grey to warm  
and dark colours.

## URBAN FLOORS

*The colour scale of the Urban Contrast floors ranges from greyish to dark brown.*

These floors are typical for this style:



Oak Moon Plank  
Brushed  
with Micro Bevel



Oak Lava Plank  
Brushed  
with Micro Bevel



Walnut American  
Andante 3-Strip



The Urban floors have a more masculine expression. They have a structure and texture resembling the rough materials of an urban habitat: concrete, asphalt, brick and stone. The vintage 1950s aura of a beautiful walnut floor is also perfect for this style.

See all our floors for the Rustic style at [boen.com](https://boen.com)





←  
By pairing exposed  
brickwork and clean  
surfaces you achieve  
a creative urban  
ambience.







→  
Dare to choose flooring with  
strong personality, and challenge  
your boundaries!





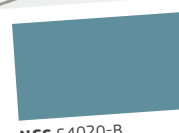
## URBAN COMMENTS FROM HELLE

This is such an inspiring style, so easy to play around with in order to find your perfect individual mix! If you love this style you will enjoy exploring its depth of colours and the great meetings of materials. And the floors in this style are simply stunning; great texture and strong personalities!

*Paints to match:*



NCS S7010-B10G



NCS S4020-B



NCS 2060-Y75R



NCS 6303-Y43R



NCS S7010-R50B



NCS 6022-Y98R



2

*Metallic elements are decorative and in trend.*

### Individual style and playful design

Coincidences? Not here! You reflect yourself and express an individual style with a sense for playful design.

Urban Contrast means taking new paths. It means breaking with tradition, mixing materials, experimenting with colours and finding your own look.

### Historical origins

The Urban Contrast style originates in the design era often referred to as Mid-Century. Modern American designers who "forgot" all the rules and allowed free play with organic shapes and bright colours led the way and developed new furniture in plexiglas and plastic.

### Organic shapes and powerful graphics

Typical features in the Urban Contrast style are organic shapes, particularly in furniture,

while powerful graphics in art and materials are easily recognisable with their clear colours and bizarre motifs. Objects are found in both vintage and design shops, with brand names like Eames and Dixon.

### Dark woods, leather and bold colours

There is heavy use of dark woods in the Urban Contrast style, such as teak and walnut, as well as the new hardwood floors in greyish hues. Choose leather and textiles in warm, earthy colours contrasted by a pop of yellow, red, blue and green.

Urban Contrast is always current, and constantly challenges the established. It is about daily functionality, presented with humour and warmth.

1 | Rustic surface of Oak Lava, smoked brushed and large knots with a lively limed colour effect within the grain.

2 | Void light by Tom Dixon.

3 | Tray Table by HAY.

4 | Oak Moon, plank.

5 | Hallingdal lounge chair by HAY.

6 | Warm cognac-coloured leather.

7 | Walnut, 3-strip.



3



4



5

7



6



Walnut American Andante, 3-Strip

## THE FLOORS

Walnut American  
Andante, 3-StripOak Lava  
Plank

### Vintage aura

The elegant walnut floor has a stunning vintage aura that brings images of a 1950s metropolis to mind. Contrasted with neon it has a truly modern urban appeal.

### Typical urban

The rough surface with the range of colour from a deep warm brown to a sandy yellow tint creates a truly unique finish. The plank Oak Lava with its lively surface and the haptic perception of the knots and cracks are outstanding and the perfect choice for the Urban Contrast style.





Let the floor become  
a beautiful backdrop  
for your favourite pieces  
of furniture.





Invest in an iconic piece like the Barcelona chair.

1



2



3



Oak Moon, Plank

Golden leather will age beautifully.



4

5

## GET THE URBAN *LOOK*

Walnut Andante, 3-Strip

Oak Moon, Plank

Oak Lava, Plank

6



7

### Urban furniture and accessories you will love:

1. The Barcelona chair by Knoll is an icon of the modern movement, dating back to the 1930s and designed by Ludwig Mies van der Rohe.
2. Golden dynamics in the Moon copper lamp by Verpan.
3. Add a decorative wool carpet to your floor, like Dot Carpet by Hay.
4. EJ280 by Erik Jørgensen is still in production, and you can get it as either a two- or three-seater. This one in leather is vintage.
5. A place to be seated a bit away from the dynamic pulse of the city. The Oak Moon, Plank looks like concrete supporting the bricks on the wall.
6. Go retro – go modern. Combine design classics and new trends.
7. Levels, designed by Form Us By Love, has an iconic characteristic. It is made of multiple parts, assembled without tools, and is sold by One Nordic Furniture Company.
8. A classic! Bowl Krenit, design Herbert Krenchel, by Normann Copenhagen.

### Check out these blogs:

[designattractor.com](http://designattractor.com)  
[happyinteriorblog.com](http://happyinteriorblog.com)  
[modernfindings.com](http://modernfindings.com)  
[midcenturyliving.wordpress.com](http://midcenturyliving.wordpress.com)  
[blog.2modern.com](http://blog.2modern.com)  
[midcenturyobsession.com](http://midcenturyobsession.com)

8





# CLASSIC ELEGANCE

*Deep colours add radiance and warmth to the classic interior with its dignified, orderly look. Exclusive flooring emphasises the elegance, and should preferably be laid in a pattern that highlights the play of the wood.*

*This is a timeless style, with elements of creative innovation.*

The Classic Elegance style is refined, calm and orderly and is emphasised by a golden wooden floor.



## CLASSIC FLOORS

*The wood colours in the classic style start at the golden end of the spectrum, through warm brown to almost black.*

These floors are typical for this style:



Walnut American  
3-Strip



Oak Andante Plank  
Square Edged



Oak Barrel  
Castle Plank  
Brushed with Micro Bevel



Oak Animoso Plank  
with Micro Bevel



Oak Animoso  
Castle Plank  
with Micro Bevel



Oak Animoso  
Castle Plank  
Brushed with Micro Bevel



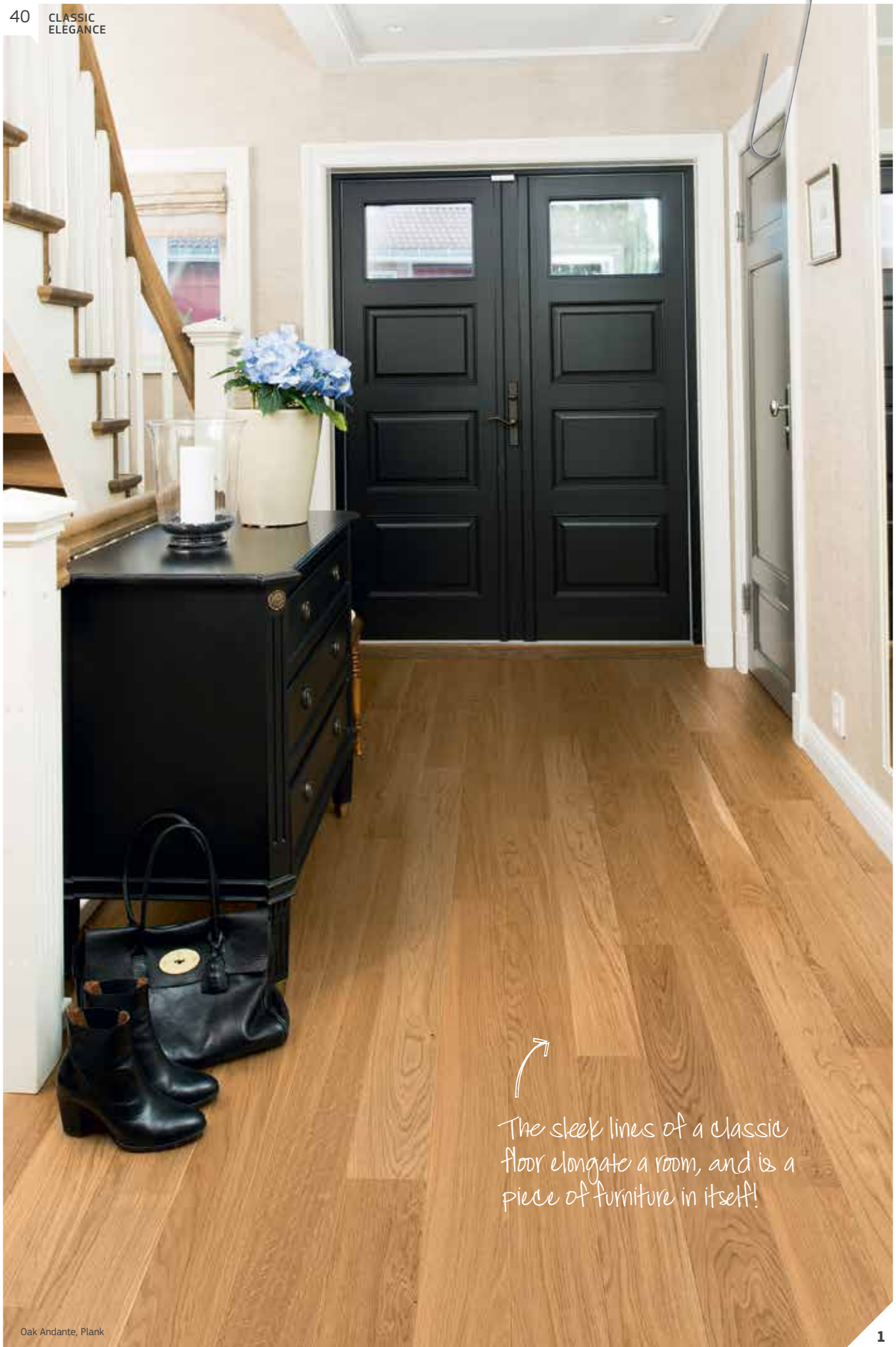
The Classic floors are both 3-strip and plank, preferably in a tranquil, elegant pattern. Both oiled and lacquered surfaces are allowed.

See all our floors for the Classic style at [boen.com](https://boen.com)



*An exclusive floor designed  
to last for decades.*





↗  
The sleek lines of a classic  
floor elongate a room, and is a  
piece of furniture in itself!



2

*Who can resist the allure of a beautiful chandelier?*



## CLASSIC COMMENTS FROM HELLE

It is not difficult to understand the appeal of the classic interior; our innate sense of longing for calm and order draws us into its warm embrace. Choose a floor that radiates elegance and harmony; I find myself drawn to the classic herringbone pattern, in a matt version ...

### Balanced and structured elegance

Balance and structure characterise the elegance that surrounds you. The curtains rest intentionally voluminously on a stunning floor, and the colours fall within a tight range.

A traditional beauty pervades the interior, while surprising elements break the formal look. It could be a beautiful rug from other climes, or a lamp with an innovative design.

### Historical origins

Classic Elegance has its roots right back in the antiquity of the Greeks and Romans, who valued beauty, aesthetics and comfort. Consistent with the style is a feeling of quality and symmetry, and the interior is organised in groups that attract attention.

### Classic and contemporary

In the midst of what may be perceived as confined there is room to play with new features and unexpected details that create a personal look. Old heirlooms or a playful sculpture reveal an identity in a traditional setting. Combine classic pieces with contemporary design and unexpected details to keep the style alive and current.

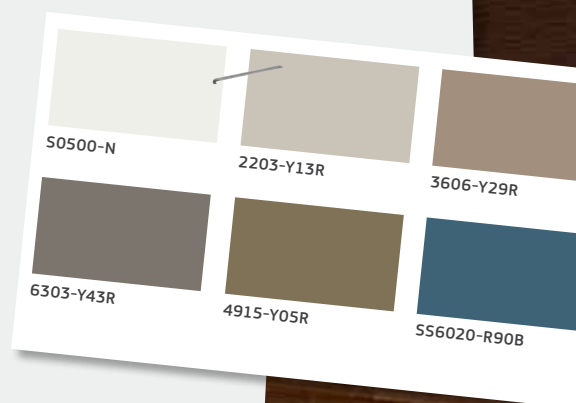
### Exclusive materials

To obtain the Classic Elegance style, use materials with an exclusive look such as velvet, marble, copper and oak. An elegant hardwood floor emphasises the style. Choose warm golden or brown hues in either traditional patterns or wide boards. The floor colour should be repeated in the furniture, and textiles and walls are preferably in dark green, deep blue, earthy colours and beige tones.

Classic Elegance is refined, calm and orderly, being kept fresh and contemporary with that unexpected creative detail.

- 1 | Oak Andante, Plank.
- 2 | Crystal lamp by Lene Bjerre.
- 3 | Baba lamp by Christiania Belysning.
- 4 | Simple rattan tray.
- 5 | A unique patch quilt bedspread in cotton velvet from Lexington.
- 6 | Velvet fabric Ombrione Lapis by Designers Guild.
- 7 | Walnut has a stylish and wholesome expression.

*Paints to match:*



3



4

◀ Create a harmonious and soothing still life by gathering some favourite pieces on a simple rattan tray.



5

7

6



Warm beige and blue are  
so right for the style.

1



2

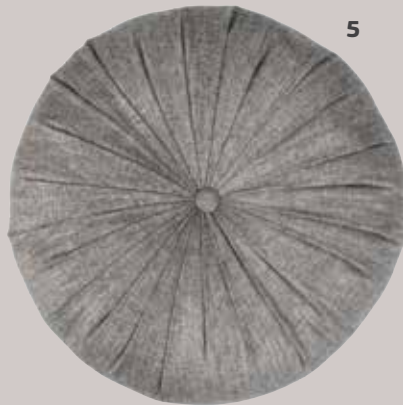
3



4



5



The distinguished  
beauty of an orchid  
is timeless.

6



Oak Walnut American Andante, 3-Strip



## GET THE CLASSIC *LOOK*

Oak Andante, Plank

Oak Animoso Castle Plank

Walnut Andante, 3-Strip

9

8



10

CLASSIC  
ELEGANCE

43

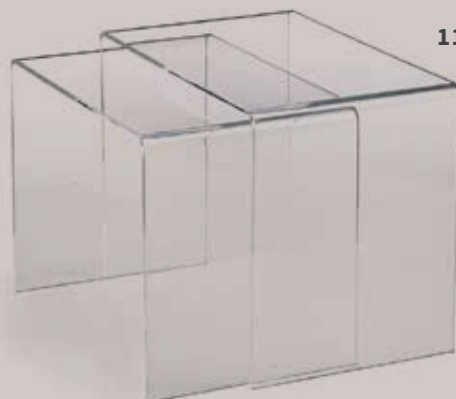
### Classic furniture and accessories you will love:

1. Get a classic touch in the sofa with a decorative sham by Lexington.
2. Serve your drinks in the Oslo glassware collection by Hadeland Glassverk.
3. Classic tableware for serving the afternoon tea, Ostindia by Rörstrand.
4. An everlasting beauty – the orchid.
5. Pillow in linen by Lene Bjerre.
6. Eight table lamp by Christiania Belysning.
7. Light paint colours contrast the richness of the Walnut 3-Strip.
8. Rug by Paul Smith, The Rug Company.
9. Professor is a stylish armchair in velvet by Art Share.
10. Small crystal pendulum lamp by Lene Bjerre. Notice the decorative rivets!
11. Bring in some top modern elements in the Classic style, such as these tables in plexiglas, by Fogia.

### Check out these blogs:

[homebunch.com](http://homebunch.com)  
[belgianpearls.blogspot.no](http://belgianpearls.blogspot.no)  
[classicasualhome.com](http://classicasualhome.com)  
[tracizeller.com](http://tracizeller.com)  
[mydesignchic.com](http://mydesignchic.com)  
[cococozy.com](http://cococozy.com)  
[greigedesign.blogspot.no](http://greigedesign.blogspot.no)  
[anettewillemine.blogspot.no](http://anettewillemine.blogspot.no)

11





# HOW TO CHOOSE YOUR FLOOR

*There are various aspects to consider when choosing a floor. We have defined the four steps below to help you choose which floor suits you best.*

1

## CHOICE OF STYLE

Most of us do not really fit only one style. But looking through the four styles we have defined in our catalogue, you might find you are more prone towards one style than the others. To help you find your flooring, we recommend that you consider which style you are striving to achieve. Which style makes you feel the most comfortable and at home?

**PURE NORDIC**



**MODERN RUSTIC**



**URBAN CONTRAST**



**CLASSIC ELEGANCE**



2

## CHOICE OF COLOUR

Each type of wood has a distinctively characteristic colour. The BOEN product range contains a large choice of colours to suit a diverse range of furnishing styles. Our products are available in a comprehensive choice of shades ranging from light to dark.





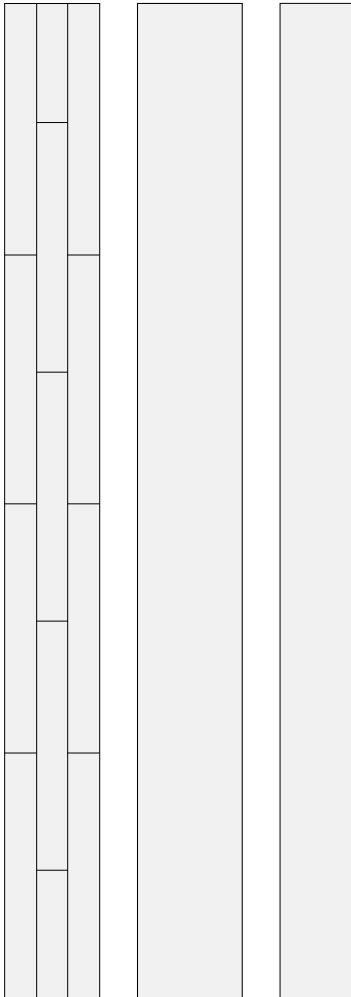
## FIND THE FLOOR OF YOUR DREAMS

You can experience the impression created by your chosen floor in our digital showroom on [www.boen.com/floorstudio](http://www.boen.com/floorstudio)

3

## CHOICE OF FORMAT

The impression created by large rooms is further enhanced by the use of large planks. Or you can choose classic 3-strip boards that enhance the natural variety of colour for each type of wood.



4

## CHOICE OF SURFACES

Oil-treated floors emphasise the character of the wood and give the hardwood flooring a very natural feel. Lacquered surfaces are easier to care for. You can choose a glossy lacquer or matt lacquer depending on your wishes.



Protect Ultra Lacquered

Matt Lacquered

NaturalPlus Oiled



STEP

1

# CHOICE OF STYLE

*To find your flooring, the first step is to consider which style appeals to you the most. If you find yourself being a mix of multiple styles, ask yourself: which style do I find myself striving to achieve? Which style makes me feel the most comfortable and at home?*

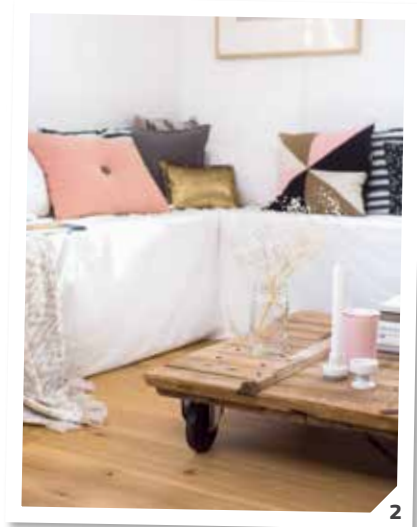
## PURE NORDIC

---



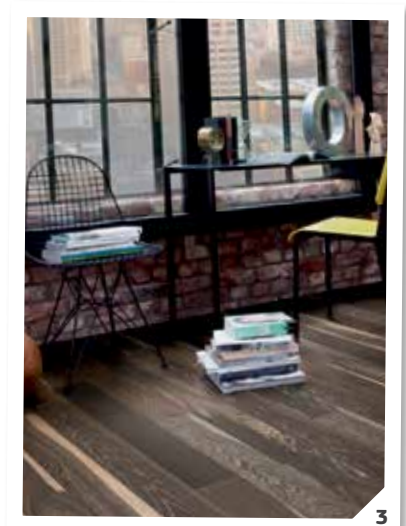
## MODERN RUSTIC

---



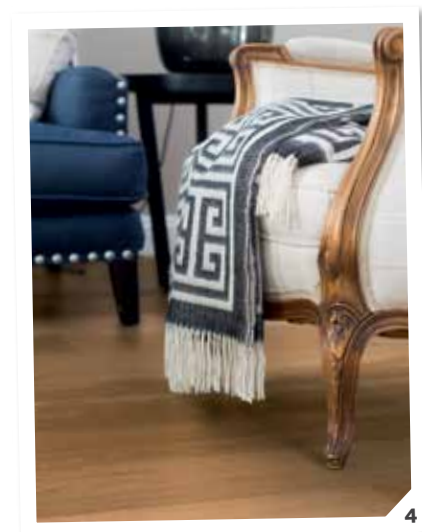
## URBAN CONTRAST

---



## CLASSIC ELEGANCE

---



# CHOICE OF COLOUR

Visit [boen.com](https://boen.com) to see our full range of products available

## PURE NORDIC *For the touch of beautiful lightness choose the Nordic look.*



Oak Concerto White  
3-Strip



Oak Pearl  
Castle Plank  
with Micro Bevel



Oak Andante  
Plank  
Square Edge



## MODERN RUSTIC *Look at the rough surface and warm colours suitable for the Rustic style.*



Oak Pearl  
Castle Plank  
with Micro Bevel



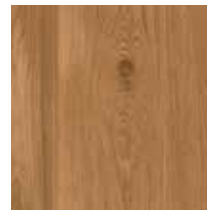
Oak Finale  
3-Strip



Oak Andante  
Plank  
Square Edge



Oak Alamo  
Castle Plank  
with Micro Bevel



Oak Animoso  
Plank  
with Micro Bevel



Oak Barrel  
Castle Plank Brushed  
with Micro Bevel



Oak Animoso  
Castle Plank  
with Micro Bevel



Oak Animoso  
Castle Plank Brushed  
with Micro Bevel



## URBAN CONTRAST *Vibrant colours and cool expressions characterise the style of Urban Contrast.*



Oak Moon  
Plank Brushed  
with Micro Bevel



Oak Lava  
Plank Brushed  
with Micro Bevel



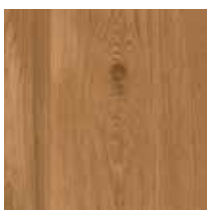
Walnut Andante  
3-Strip



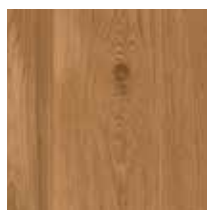
## CLASSIC ELEGANCE *Enjoy the look of sophisticated and stylish floors that are classically elegant.*



Oak Andante  
Plank  
Square Edge



Oak Animoso  
Plank  
with Micro Bevel  
Oak Animoso  
Castle Plank  
with Micro Bevel



Oak Animoso  
Castle Plank Brushed  
with Micro Bevel



Oak Barrel  
Castle Plank Brushed  
with Micro Bevel



Walnut Andante  
3-Strip





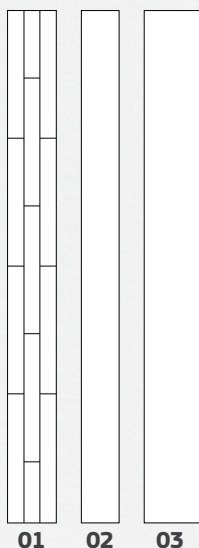
STEP

3

# CHOICE OF FORMAT

## OUR FORMATS

- 01 3-STRIP 14 X 209 X 2200MM
- 02 PLANK 14 X 138 X 2200MM
- 03 PLANK CASTLE 14 X 209 X 2200MM



## 01 3-STRIP

**Dimensions:**  
14 x 209 x 2200 mm

**BOEN X-press**

**Fields of application:** The classic among the parquet floorings. For a lively and diverse appearance. Appropriate for lots of room types.

**Types of installation:** Quick and easy floating installation without glue.

**Floor heating systems:** Suitable.

**Performance classification\*:** 1-2

**Fire protection classification:** Dfl-s1



Top layer: approx. 3.5 mm



## 02 PLANK

**Dimensions:**  
14 x 138 x 2200 mm

**BOEN X-press**

**Fields of application:** Our classic plank boards of optimum width and length ratios for an attractive look of the room over the whole surface. Optionally with bevel.

**Types of installation:** Rapid and easy floating installation completely without glue or gluing to the sub-floor.

**Floor heating systems:** Suitable to very suitable.

**Performance classification\*:** 1-2

**Fire protection classification:** Dfl-s1



Top layer: approx. 3.5 mm



## 03 PLANK CASTLE

**Dimensions:**  
14 x 209 x 2200 mm

**BOEN X-press**

**Fields of application:** Plank boards with an exceptional width for particularly spacious room effects. Micro-bevel on the longitudinal side.

**Types of installation:** Rapid and easy floating installation completely without glue or gluing to the sub-floor.

**Floor heating systems:** Suitable.

**Performance classification\*:** 1-2

**Fire protection classification:** Dfl-s1



Top layer: approx. 3.5 mm

# CHOICE OF SURFACE

*BOEN places considerable emphasis on protecting the environment during all phases of production. Neither lacquer or oil emit gases which are harmful to humans or to the environment. BOEN offers its customers a wide range of surface finishes.*



## OILED FLOORS



### **NaturalPlus – the ultimate ready-to-use natural oil**

NaturalPlus is the innovative new development from BOEN. Deep penetration of the natural oil into the wood is ensured by two-time application of the natural oil on a custom-made production line. The wood pores are saturated, and drying takes place completely naturally in the open air during a process known as the Plus-Air Process. This produces one of the best and most wear-resistant natural oil surfaces on the market.

### **NaturalPlus – breathable and ready-to-use!**

Natural oils such as sunflower, thistle or soya bean oil as well as naturally occurring waxes (carnauba, candelilla) are the components of this precious oil.

### **The benefits of NaturalPlus at a glance:**

- › Ready-to-use – immediate use of the parquet floor after installation!
- › Extremely good protection properties against liquids – superior compared to competitive products!
- › Natural ingredients – no emissions!
- › Improved UV stability!

## LACQUERED FLOORS



### **Protect Ultra**

Very hard-wearing factory-applied 7 layer silk finish considerably reduces the care requirements and increases the durability of the parquet floor. Protect-Ultra is cured by UV light and does not emit any dangerous chemicals or gases.



### **Matt Lacquered**

This 7 layer Protect-Ultra sealing with a very low gloss level makes the surface look “as oiled”. A natural look combined with the advantages of a scratch-resistant finish.



# CLEANING AND CARE

*In order to ensure you enjoy long-lasting pleasure from your hardwood floor, we offer the perfect range of cleaning and care products. Whatever surface finish you have chosen, we have the right product for you.*

The cleaning products are adapted to the various surface treatments. As a general rule lacquered floors should be cleaned with synthetic cleaner (with no grease content) whereas oiled floors should be cleaned with soap (containing grease).

If it is necessary to wipe the floor, use the appropriate cleaning product for the type of flooring. Never pour water onto your parquet

floor as the wood might swell and damage the floor. With regular use a cleaning agent acts as a natural moisturising agent and the floor surface will become more resistant to soiling and the appearance of wear.

More information is available at [boen.com](http://boen.com).



## SKIRTING BOARDS

Skirting boards made from BOEN parquet, solid wood, veneered, traditional German profiled.



## CARE AND MAINTENANCE PRODUCTS

For lacquered and oiled parquet floorings.



## GUARANTEE

All of BOEN's flooring comes with a 20 year guarantee, as standard for all domestic installations.

# NATURE AND THE ENVIRONMENT

*Respect for nature is not only about sensitive methods of production. It is as much a matter of the attitude that we take the environment seriously.*



BOEN flooring is a product of natural materials. Respect for nature and for the requirement of environmental sustainability is reflected in our processing and management of raw materials. BOEN constantly seeks methods for processing the raw materials in the most gentle and sustainable manner possible.

The raw materials processed at BOEN come from sustainable forests. Beyond that, the BOEN factories have implemented a chain of custody system in accordance with the FSC™ standards. The Forest Stewardship Council is a well-known forest certification scheme. BOEN FSC license numbers are: BOEN Norway FSC™ C051117, BOEN Germany FSC™ C101713, BOEN Lithuania FSC™ C021510, BOEN UK FSC™ C047288, BOEN US FSC™ C095158. FSC – The mark of responsible forestry, [www.fsc.org](http://www.fsc.org).

BOEN's production methods are noted for their quality and excellent use of resources. The timber is quickly transported to the sawmill

and cut, so that the drying process can start as soon as possible, thereby avoiding discoloration. The wood is dried under monitored conditions. This allows us to guarantee the highest degree of stability for our floors.

Multi-layer hardwood flooring provides considerable savings in resources compared to solid hardwood flooring. The use of hardwood is limited to the wear layer. Three-fifths of our parquet is based on spruce and pine woods. Sawn and planed chips are by-products that occur naturally and are used in the factory's heating systems for the drying kilns, hot water supply and fuel pellets.

The German Blue Angel label has been awarded to BOEN, confirming that our manufacturing methods produce minimal amounts of waste gas and consequently contribute to a good interior climate.



**DOP 4658**  
**-1.1-07.2013**





**Regions: United Kingdom, Republic of Ireland**

BOEN UK LTD

320-322 Beech Drive, Hartlebury Trading Estate,  
Hartlebury, Worcestershire, DY10 4JB, United Kingdom

Phone: +44 (0) 800 652 5280

Fax: +44 (0) 800 011 3701

E-mail: [sales@boen.co.uk](mailto:sales@boen.co.uk)

